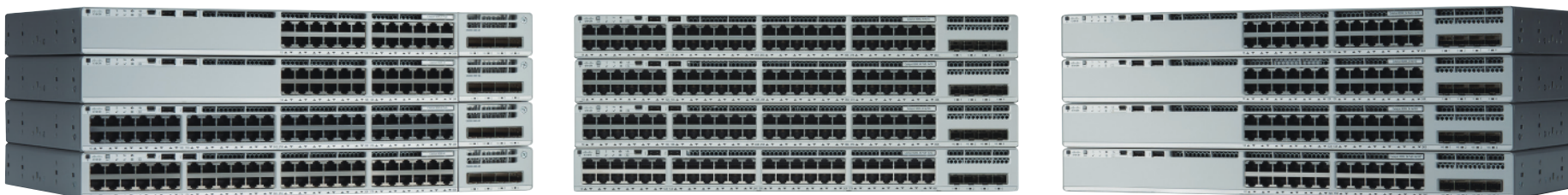


Extend Intent-Based Networking Everywhere

The Cisco Catalyst 9200 Series of enterprise-class access switches extend the power of intent-based networking and Catalyst 9000 hardware and software innovation to a broader set of deployments. Compared to the scale and feature richness of the Catalyst 9300 Series switches, Catalyst 9200 Series switches focus on offering right-sized switching for simple branch deployments. With its family pedigree, Catalyst 9200 Series offers simplicity without compromise — it is secure, always on and provides a new level of IT simplicity.

With [full PoE+ capability](#), [power and fan redundancy](#), [stacking bandwidth up to 160 Gbps](#), [modular uplinks](#), [Layer 3 feature support](#), and [cold patching](#), these switches are the industry's unparalleled solution with differentiated resiliency and progressive architecture for cost-effective branch-office access.



Highlights

- Cisco UADP 2.0 Mini with integrated CPU offers customers optimized scale with better cost structure
- 24 or 48 × 1GE data or PoE+ ports, with [1/2.5/5/10GE \(mGig\) ports \(some models\)](#) **NEW**
- Fixed uplinks (Catalyst 9200L) with 4 × 1GE SFP, 4 × 10GE SFP+, or [2 × 25GE SFP28](#) **NEW**
- Optional uplink modules (Catalyst 9200) with 4 × 1GE SFP or 4 × 10GE SFP+, [2 × 25GE SFP28](#), [2 × 40GE QSFP+](#) **NEW**
- Resiliency with field-replaceable redundant power supplies (Catalyst 9200L & 9200) and fans (Catalyst 9200 only)
- Operational efficiency with optional backplane stacking, supporting stacking bandwidth up to 80 Gbps with Cisco StackWise-80 (Catalyst 9200L) or up to 160 Gbps with Cisco StackWise-160 (Catalyst 9200)
- Cisco IOS XE: A Common Licensing based operating system for the enterprise Cisco Catalyst 9000 product family with support for model-driven programmability and streaming telemetry
- Layer 3 capabilities, including OSPF, EIGRP, ISIS, RIP, and routed access
- Enhanced security with AES-128 MACsec encryption, policy-based segmentation, and trustworthy systems
- Advanced network monitoring using Full Flexible NetFlow
- Cisco Software-Defined Access (SD-Access):
 - Simplified operations and deployment with policy-based automation from edge to cloud managed with Cisco Identity Services Engine (ISE)
 - Network assurance and improved resolution time through Cisco DNA Center
- Plug and Play (PnP) enabled: A simple, secure, unified, and integrated offering to ease new branch or campus device rollouts or updates to an existing network
- Cisco UADP 2.0 Mini ASIC with programmable pipeline and micro-engine capabilities, along with template-based, configurable allocation of Layer 2 and Layer 3 forwarding, Access Control Lists (ACLs), and Quality of Service (QoS) entries

Cisco Catalyst 9200 Series

Overview

Platform Spec

Licenses & Accessories

Transition Guide

Cisco Catalyst 9200 Series (Fixed Uplink Models)

Product SKU	Service SKU SNTC 8*5*NBD	Software Package	Downlinks		Uplinks				PoE			Power Supply		Stack- Wise	Rack Mount
			1GE RJ45	mGig RJ45	1GE SFP	10GE SFP+	25GE SFP28	Network Module Slot	Ports	Power Budget		Slots	Default		
										Default	Max				
C9200L-24T-4G-E	CON-SNT-C920L24T	Essentials	24		4							2	1 × 125 W AC	80	1 RU
C9200L-24T-4G-A	CON-SNT-C920L24A	Advantage	24		4							2	1 × 125 W AC	80	1 RU
C9200L-24P-4G-E	CON-SNT-C920L24G	Essentials	24		4				24	370 W	740 W	2	1 × 600 W AC	80	1 RU
C9200L-24P-4G-A	CON-SNT-C920L2GA	Advantage	24		4				24	370 W	740 W	2	1 × 600 W AC	80	1 RU
C9200L-24T-4X-E	CON-SNT-C920L24X	Essentials	24			4						2	1 × 125 W AC	80	1 RU
C9200L-24T-4X-A	CON-SNT-C9200L24	Advantage	24			4						2	1 × 125 W AC	80	1 RU
C9200L-24P-4X-E	CON-SNT-C920024X	Essentials	24			4			24	370 W	740 W	2	1 × 600 W AC	80	1 RU
C9200L-24P-4X-A	CON-SNT-C920L24P	Advantage	24			4			24	370 W	740 W	2	1 × 600 W AC	80	1 RU
C9200L-24PXG-4X-E <small>NEW</small>	CON-SNT-C920L2EP	Essentials	16	8		4			24	370 W	740 W	2	1 × 600 W AC	80	1 RU
C9200L-24PXG-4X-A <small>NEW</small>	CON-SNT-CA920L2X	Advantage	16	8		4			24	370 W	740 W	2	1 × 600 W AC	80	1 RU
C9200L-24PXG-2Y-E <small>NEW</small>	CON-SNT-CL9X20L2	Essentials	16	8			2		24	370 W	740 W	2	1 × 600 W AC	80	1 RU
C9200L-24PXG-2Y-A <small>NEW</small>	CON-SNT-CY9020LA	Advantage	16	8			2		24	370 W	740 W	2	1 × 600 W AC	80	1 RU
C9200L-48T-4G-E	CON-SNT-C920L48E	Essentials	48		4							2	1 × 125 W AC	80	1 RU
C9200L-48T-4G-A	CON-SNT-C920048G	Advantage	48		4							2	1 × 125 W AC	80	1 RU
C9200L-48P-4G-E	CON-SNT-C92004GE	Essentials	48		4				48	740 W	1,440 W	2	1 × 1,000 W AC	80	1 RU
C9200L-48P-4G-A	CON-SNT-C9200L48	Advantage	48		4				48	740 W	1,440 W	2	1 × 1,000 W AC	80	1 RU
C9200L-48T-4X-E	CON-SNT-C920L4XE	Essentials	48			4						2	1 × 125 W AC	80	1 RU
C9200L-48T-4X-A	CON-SNT-C920L48T	Advantage	48			4						2	1 × 125 W AC	80	1 RU
C9200L-48P-4X-E	CON-SNT-C9200L4X	Essentials	48			4			48	740 W	1,440 W	2	1 × 1,000 W AC	80	1 RU
C9200L-48P-4X-A	CON-SNT-C920L48P	Advantage	48			4			48	740 W	1,440 W	2	1 × 1,000 W AC	80	1 RU
C9200L-48PXG-4X-E <small>NEW</small>	CON-SNT-C20L94XG	Essentials	36	12		4			48	740 W	1,440 W	2	1 × 1,000 W AC	80	1 RU
C9200L-48PXG-4X-A <small>NEW</small>	CON-SNT-C9200L4A	Advantage	36	12		4			48	740 W	1,440 W	2	1 × 1,000 W AC	80	1 RU
C9200L-48PXG-2Y-E <small>NEW</small>	CON-SNT-C9200LEG	Essentials	40	8			2		48	740 W	1,440 W	2	1 × 1,000 W AC	80	1 RU
C9200L-48PXG-2Y-A <small>NEW</small>	CON-SNT-C9200LYA	Advantage	40	8			2		48	740 W	1,440 W	2	1 × 1,000 W AC	80	1 RU

Overview

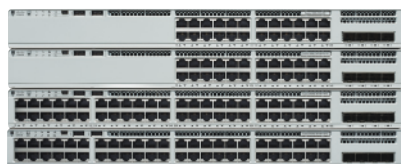
Platform Spec

Licenses & Accessories

Transition Guide

Cisco Catalyst 9200 Series (Modular Uplink Models)

Product SKU	Service SKU SNTC 8*5*NBD	Software Package	Downlinks		Uplinks				Network Module Slot	PoE		Power Supply		Stack- Wise	Rack Mount
			1GE RJ45	mGig RJ45	1GE SFP	10GE SFP+	25GE SFP28	Ports		Power Budget		Slots	Default		
										Default	Max				
C9200-24T-E	CON-SNT-C920024T	Essentials	24					1				2	1 × 125 W AC	160	1 RU
C9200-24T-A	CON-SNT-C920024A	Advantage	24					1				2	1 × 125 W AC	160	1 RU
C9200-24P-E	CON-SNT-C920024P	Essentials	24					1	24	370 W	740 W	2	1 × 600 W AC	160	1 RU
C9200-24P-A	CON-SNT-C92024PA	Advantage	24					1	24	370 W	740 W	2	1 × 600 W AC	160	1 RU
C9200-24PXG-E	CON-SNT-C920024E	Essentials	16	8				1	24	740 W	1,440 W	2	1 × 1,000 W AC	160	1 RU
C9200-24PXG-A	CON-SNT-C92002GA	Advantage	16	8				1	24	740 W	1,440 W	2	1 × 1,000 W AC	160	1 RU
C9200-48T-E	CON-SNT-C920048E	Essentials	48					1				2	1 × 125 W AC	160	1 RU
C9200-48T-A	CON-SNT-C920048T	Advantage	48					1				2	1 × 125 W AC	160	1 RU
C9200-48P-E	CON-SNT-C92048PE	Essentials	48					1	48	740 W	1,440 W	2	1 × 1,000 W AC	160	1 RU
C9200-48P-A	CON-SNT-C920048P	Advantage	48					1	48	740 W	1,440 W	2	1 × 1,000 W AC	160	1 RU
C9200-48PXG-E	CON-SNT-C9200XGE	Essentials	40	8				1	48	740 W	1,440 W	2	1 × 1,000 W AC	160	1 RU
C9200-48PXG-A	CON-SNT-C92004XA	Advantage	40	8				1	48	740 W	1,440 W	2	1 × 1,000 W AC	160	1 RU



Catalyst 9200L Fixed Uplink Models
Stacked using optional StackWise-80 Kits, 1 PSU



Catalyst 9200 Modular Uplink Models
Stacked using optional StackWise-160 Kits, 2 PSU (optional 2nd PSU installed)

Cisco DNA Licenses for Cisco Catalyst 9200L Fixed Uplink Models

Software Package	Product SKU			Compatible Model
	3-Years	5-Years	7-Years	
Cisco DNA Essentials	C9200L-DNA-E-24-3Y	C9200L-DNA-E-24-5Y	C9200L-DNA-E-24-7Y	24-port Catalyst 9200L (Network Essentials) ^{*1}
	C9200L-DNA-E-48-3Y	C9200L-DNA-E-48-5Y	C9200L-DNA-E-48-7Y	48-port Catalyst 9200L (Network Essentials) ^{*2}
Cisco DNA Advantage	C9200L-DNA-A-24-3Y	C9200L-DNA-A-24-5Y	C9200L-DNA-A-24-7Y	24-port Catalyst 9200L (Network Advantage) ^{*3}
	C9200L-DNA-A-48-3Y	C9200L-DNA-A-48-5Y	C9200L-DNA-A-48-7Y	48-port Catalyst 9200L (Network Advantage) ^{*4}

*1 C9200L-DNA-E-24 is required in CCW. *2 C9200L-DNA-E-48 is required in CCW.

*3 C9200L-DNA-A-24 is required in CCW. *4 C9200L-DNA-A-48 is required in CCW.

Cisco DNA Licenses for Cisco Catalyst 9200 Modular Uplink Models

Software Package	Product SKU			Compatible Model
	3-Years	5-Years	7-Years	
Cisco DNA Essentials	C9200-DNA-E-24-3Y	C9200-DNA-E-24-5Y	C9200-DNA-E-24-7Y	24-port Catalyst 9200 (Network Essentials) ^{*1}
	C9200-DNA-E-48-3Y	C9200-DNA-E-48-5Y	C9200-DNA-E-48-7Y	48-port Catalyst 9200 (Network Essentials) ^{*2}
Cisco DNA Advantage	C9200-DNA-A-24-3Y	C9200-DNA-A-24-5Y	C9200-DNA-A-24-7Y	24-port Catalyst 9200 (Network Advantage) ^{*3}
	C9200-DNA-A-48-3Y	C9200-DNA-A-48-5Y	C9200-DNA-A-48-7Y	48-port Catalyst 9200 (Network Advantage) ^{*4}

*1 C9200-DNA-E-24 is required in CCW. *2 C9200-DNA-E-48 is required in CCW.

*3 C9200-DNA-A-24 is required in CCW. *4 C9200-DNA-A-48 is required in CCW.

 **Ordering and Licensing Guide**

You must order a Cisco DNA License in order to purchase a switch.

A Cisco Smart Account is mandatory when ordering a Cisco DNA License.

The Cisco Smart Account is a new solution that provides a central location to manage Cisco software licenses across an entire organization, allowing partners and customers to optimize their software management.

To obtain a Cisco Smart Account, visit [Cisco Software Central](#) and select the [Request a Smart Account] option under the [Administration] heading.

 software.cisco.com

Cisco Catalyst 9200 Series

[Overview](#)
[Platform Spec](#)
[Licenses & Accessories](#)
[Transition Guide](#)

Network Modules for Cisco Catalyst 9200 Modular Uplink Models

Product SKU	Description	Compatible Model
C9200-NM-4G	4 × 1GE SFP Network Module	Catalyst 9200
C9200-NM-4X	4 × 10GE SFP+ Network Module	Catalyst 9200
C9200-NM-2Y <small>NEW</small>	2 × 25GE SFP28 Network Module	Catalyst 9200 (mGig)
C9200-NM-2Q <small>NEW</small>	2 × 40GE QSFP+ Network Module	Catalyst 9200 (mGig)

Secondary Power Supply Modules for Cisco Catalyst 9200L Fixed Uplink Models

Product SKU	Description	Compatible Model
PWR-C5-125WAC/2	125 W AC Power Supply Module	24 or 48-port Catalyst 9200L (Data)
PWR-C5-600WAC/2	600 W AC Power Supply Module	24-port Catalyst 9200L (PoE+)
PWR-C5-1KWAC/2	1,100 W AC Power Supply Module	48-port Catalyst 9200L (PoE+)

Cisco StackWise-80 Kit & Cables for Cisco Catalyst 9200L Fixed Uplink Models

Product SKU	Description	Compatible Model
C9200L-STACK-KIT	StackWise-80 Kit ^{*1}	Catalyst 9200L
STACK-T4-1M	StackWise Cable (1 m)	Catalyst 9200L
STACK T4-3M	StackWise Cable (3 m)	Catalyst 9200L

*1 The kit consists of two adapters and a stacking cable (50 cm).

Secondary Power Supply Modules for Cisco Catalyst 9200 Modular Uplink Models

Product SKU	Description	Compatible Model
PWR-C6-125WAC/2	125 W AC Power Supply Module	24 or 48-port Catalyst 9200 (Data)
PWR-C6-600WAC/2	600 W AC Power Supply Module	24-port Catalyst 9200 (PoE+)
PWR-C6-1KWAC/2	1,100 W AC Power Supply Module	48-port Catalyst 9200 (PoE+)

Cisco StackWise-160 Kit & Cables for Cisco Catalyst 9200 Modular Uplink Models

Product SKU	Description	Compatible Model
C9200-STACK-KIT	StackWise-160 Kit ^{*1}	Catalyst 9200
STACK-T4-1M	StackWise Cable (1 m)	Catalyst 9200
STACK T4-3M	StackWise Cable (3 m)	Catalyst 9200

*1 The kit consists of two adapters and a stacking cable (50 cm).

Cisco StackWise-80/160




The Cisco StackWise-80/160 provides stacking of up to eight Cisco Catalyst 9200 Series switches with the optional Cisco StackWise-80/160 Kits.

Mixed stacking is not supported. You cannot stack fixed uplink models (Catalyst 9200L) with modular uplink models (Catalyst 9200), or other Catalyst switches, e.g., Cisco Catalyst 2960-X and 2960-XR Series.

Cisco StackWise-80/160 Scalability & Performance

Stack Member	Stack Bandwidth	Stack Limit
Catalyst 9200L Fixed Uplink Models with Same License Level	80 Gbps	8
Catalyst 9200 Modular Uplink Models with Same License Level	160 Gbps	8

Benefits of Transitioning to Cisco Catalyst 9200 Series

Feature	Catalyst 2960-X	Catalyst 2960-XR	Catalyst 9200	Benefit	
 Scale and Performance	Bandwidth per Stack	80 Gbps	80 Gbps	80 Gbps 160 Gbps	Twice the density at nearly the same price.
	Uplinks	4 × 1GE 2 × 10GE	4 × 1GE 2 × 10GE	4 × 1GE 4 × 10GE 2 × 25GE	
	Multigigabit Downlink			✓	Support speeds above 1G in traditional cabling environments.
 Advanced Security	Full Flexible NetFlow	✓	✓	✓	
	TrustSec and SGT for Wired and Wireless	✓	✓	✓	Orchestrate role-based access to corporate resources.
	Trustworthy Systems	✓ ^{*1}	✓ ^{*1}	✓	
	Native MACsec			✓	AES-128, MACsec-128.
 Simplicity and Automation	IOS XE OS			✓	Single common network OS across routing, switching, wireless, and IoT.
	Model-Driven Programmability			✓	Standards-based programmable interfaces.
	Streaming Telemetry			✓	Rich contextual insights.
	SD-Access Programmability			✓	Automation and assurance.

*1 Except some models.

Overview

Platform Spec

Licenses & Accessories

Transition Guide

Transition Map

Existing Model		New Model	
Catalyst 2960-X	Catalyst 2960-XR	Catalyst 9200	Interface
WS-C2960X-24TS		C9200L-24T-4G	24 × 1GE, 4 × 1GE SFP
WS-C2960X-24PS WS-C2960X-24PSQ		C9200L-24P-4G	24 × 1GE PoE+, 4 × 1GE SFP
WS-C2960X-24TD		C9200L-24T-4X	24 × 1GE, 4 × 10GE SFP+
WS-C2960X-24PD		C9200L-24P-4X	24 × 1GE PoE+, 4 × 10GE SFP+
		C9200L-24PXG-4X <small>NEW</small>	16 × 1GE PoE+, 8 × mGig PoE+, 4 × 10GE SFP+
		C9200L-24PXG-2Y <small>NEW</small>	16 × 1GE PoE+, 8 × mGig PoE+, 2 × 25GE SFP28
WS-C2960X-48TS		C9200L-48T-4G	48 × 1GE, 4 × 1GE SFP
WS-C2960X-48LPS WS-C2960X-48FPS		C9200L-48P-4G	48 × 1GE PoE+, 4 × 1GE SFP
WS-C2960X-48TD		C9200L-48T-4X	48 × 1GE, 4 × 10GE SFP+
WS-C2960X-48LPD WS-C2960X-48FPD		C9200L-48P-4X	48 × 1GE PoE+, 4 × 10GE SFP+
		C9200L-48PXG-4X <small>NEW</small>	36 × 1GE PoE+, 12 × mGig PoE+, 4 × 10GE SFP+
		C9200L-48PXG-2Y <small>NEW</small>	40 × 1GE PoE+, 8 × mGig PoE+, 2 × 25GE SFP28
	WS-C2960XR-24TS WS-C2960XR-24TD	C9200-24T	24 × 1GE
	WS-C2960XR-24PS WS-C2960XR-24PD	C9200-24P	24 × 1GE PoE+
	WS-C2960XR-48TS WS-C2960XR-48TD	C9200-48T	48 × 1GE
	WS-C2960XR-48LPS WS-C2960XR-48FPS WS-C2960XR-48LPD WS-C2960XR-48FPD	C9200-48P	48 × 1GE PoE+
		C9200-24PXG <small>NEW</small>	16 × 1GE PoE+, 8 × mGig PoE+
		C9200-48PXG <small>NEW</small>	40 × 1GE PoE+, 8 × mGig PoE+

Network modules are supported:

- 4 × 1GE SFP
- 4 × 10GE SFP+
- 2 × 25GE SFP28
- 2 × 40GE QSFP+